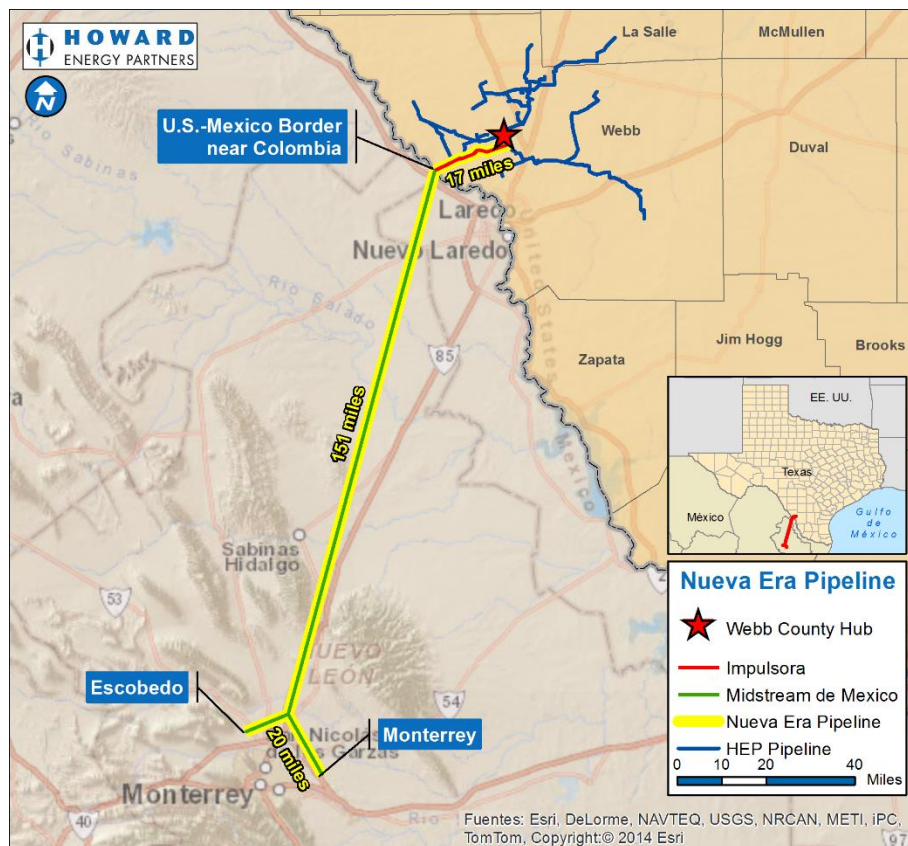


**MIDSTREAM DE MEXICO BINDING OPEN SEASON**  
**From November 3, 2015 through December 16, 2015**

**PROJECT OVERVIEW**

Nueva Era Pipeline, LLC, through its subsidiary Midstream de Mexico, S. de R.L. de C.V., intends to design, construct, and operate a natural gas pipeline system designed to transport gas supplies from the US to end users, LDCs and gas marketers in and around Monterrey, Nuevo Leon, Mexico. The Midstream de Mexico system will originate at an international border-crossing between the United States of America in Webb County, Texas and Mexico in the vicinity of Colombia, State of State of Nuevo Leon and extend to measurement stations near Monterrey, Nuevo Leon. The Midstream de Mexico pipeline, as currently configured, consists of approximately 171 miles or 275 kilometers of high pressure natural gas pipeline capable of delivering at least 504,000 MMBtu/day of lean, dry gas to points of delivery in Monterrey and Escobedo. The Midstream de Mexico system will receive gas at the border-crossing from Impulsora Pipeline, LLC, a new Texas intrastate pipeline system originating at the Howard Energy Hub in Webb County, Texas.

**The Midstream de Mexico Open Season will commence at 9:00 AM CST on November 3, 2015, and close at 4:00 PM CST on December 16, 2015. Interested parties must submit a Request for Service form prior to the deadline to participate in this Open Season.**



Midstream de Mexico has entered into a long term, binding agreement for 504,000 MMBtu/day of capacity with a shipper. This agreement is considered to be a prearranged conforming bid and will not be subject to prorating in this Open Season. Additional commitments secured in this Open Season will be included in determining the optimal size and design of the pipeline, subject to a determination of technical and economic feasibility. Based on such commitments and evaluation, the diameter of the pipeline may be increased and compression facilities and delivery laterals may be added. Depending on the details of such additional commitments, the pipeline could be sized to deliver up to 1,120,000 MMBtu/day. The in-service date for the pipeline is anticipated to occur in June 2017, subject to necessary governmental approvals.

#### **RECEIPT POINT**

Midstream de Mexico will receive gas at the border-crossing from Impulsora Pipeline. Interested parties may, but are not required to, contract for upstream pipeline capacity on Impulsora Pipeline or may make separate arrangements to deliver gas into Midstream de Mexico.

#### **DELIVERY POINT(S)**

The following delivery points will be available on Midstream de Mexico:

Escobedo

Monterrey

Interested parties may identify additional desired delivery points by providing specific (i.e., latitude and longitude) or general location descriptions in response to this Open Season. Such additional facilities are not included in current project costs or rates. The costs for additional facilities would either be reimbursed 100% by the requesting party or the negotiated reservation rate would be adjusted accordingly.

#### **FUEL USE CHARGE**

Depending on the final design, Midstream de Mexico may have a Fuel Use Charge of 0%-2%.

#### **TERM**

Midstream de Mexico reserves the right to reject any requests with a contract term of less than ten (10) years to the extent that such lesser terms are not economically viable.

#### **REGULATED TARIFF RATE**

The estimated statutory tariff rates will be determined at the conclusion of the Open Season based on the facilities required to satisfy the firm service requests from interested parties who have submitted binding agreements.

#### **CONTRACTUAL RATE**

Midstream de Mexico is offering parties the opportunity to agree to a fixed contractual rate for the term of the agreement in lieu of the regulated tariff rate. The contractual rate is being offered on a non-discriminatory basis to shippers that enter into a binding agreement in the

Open Season with a term of 15 years or more, and in no event will exceed the regulated tariff rate.

### **PARTICIPATION IN THE OPEN SEASON**

Interested parties wishing to participate in this Open Season must complete and sign a Request for Service (RFS) Form.

By signing and submitting an RFS Form, the party is committing to proceed in good faith to negotiate and execute a Firm Transportation Services Agreement or a binding precedent agreement with Midstream de Mexico, within fifteen (15) calendar days of the close of the Open Season. If a party does not execute the TSA or a binding precedent agreement by such deadline, Midstream de Mexico reserves the right to reject such party's RFS Form, cease negotiations with the interested party, and reallocate the associated capacity.

### **RESERVATIONS OF RIGHTS**

Midstream de Mexico reserves the right to reject any RFS Form that (i) is not received by the close of the Open Season, (ii) is not complete and conforming, (iii) contains delayed in-service dates, partial year terms, or other contingencies, or (iv) could adversely affect the economics or operational viability of Midstream de Mexico.

### **CONTACT INFORMATION**

Interested parties may contact the following personnel to discuss any questions or to seek additional information about how to participate in this Open Season; provided however that verbal expressions of interest do not constitute requests for service. Parties do not need to enter into a confidentiality agreement to participate in the Open Season; however, parties that seek additional information on costs estimates for additional delivery points, contractual rates, gas supply data or upstream pipeline proposals will be asked to return a signed nondisclosure agreement prior to Nueva Era or Midstream de Mexico releasing such information.

Brandon Seale  
+1 210-313-3441  
+52 (55) 9171-1580  
bseale@howardep.com

Shelley Corman  
(For Inquiries in English)  
+1 832-681-7311  
scorman@howardep.com

Maria Mejia  
(For Inquiries in Spanish)  
+1 832-943-2559  
mmejia@howardep.com

**RFS Forms must be submitted to [openseason@howardenergy.com](mailto:openseason@howardenergy.com) or [termporaabierta@howardep.com](mailto:termporaabierta@howardep.com) by 4:00 PM CT on December 16, 2015 or received by mail at the address set forth on the RFS form by such date and time.**